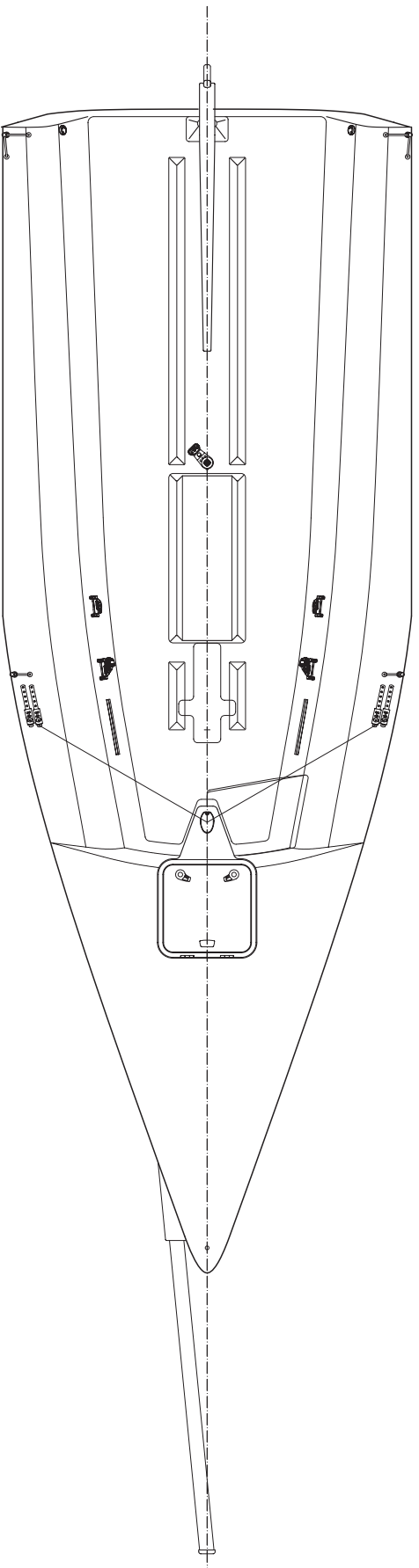
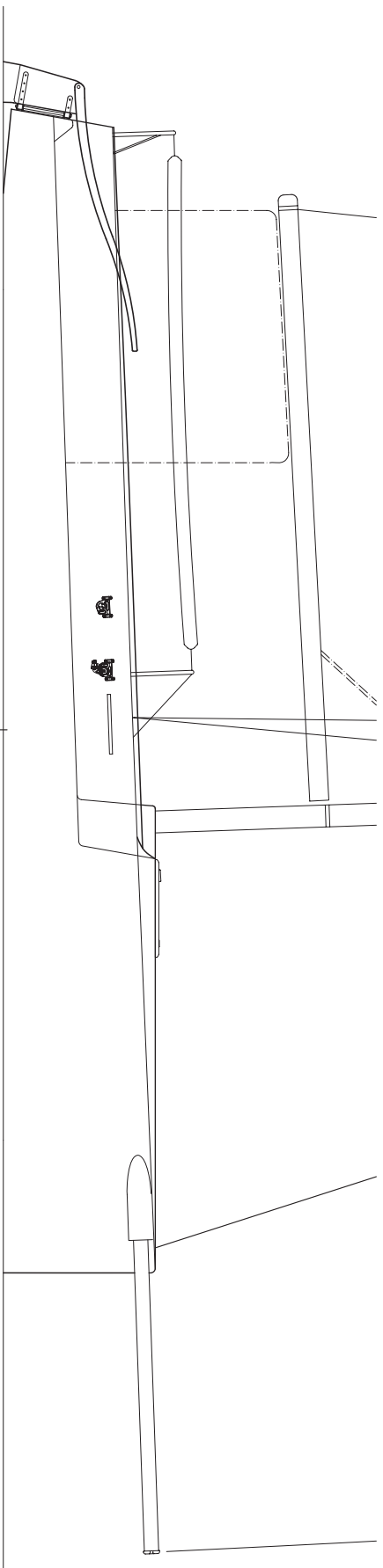


**Audi**

**MELGES<sup>20</sup>**

**REICHEL PUGH**  
YACHT DESIGN



**Audi**

**MELGES 20**

©2009 Melges Performance Sailboats. All Rights Reserved. The Audi Melges 20™ is designed by Reichel/Pugh Yacht Design. www.melges20.com

**REICHEL/PUGH**  
YACHT DESIGN

# Design Features

- Overall modern appearance including a beautiful square top mainsail
- Smooth comfortable design throughout with large radius edges
- Large comfortable cockpit with simple to sail deck layout
- No winches!
- Enclosed interior with access while sailing
- Sail stowage below deck when not sailing
- High freeboard for a dry ride
- Flat stable aft planing hull sections
- Fine bow entry for upwind performance
- Carbon fiber 'M' rig setup for the ultimate in performance, simple to tune
- Cool carbon spar with clear coat finish
- Shroud tracks for no adjustment on turnbuckles while sailing
- Above boom vang system
- Custom aluminum boom extrusion with no tunnel
- Carbon bowsprit with 'one pull' tack line-pole out system and under deck concealed housing trough with water drainage out back of cockpit
- Super-sleek carbon foils
- Retractable high aspect keel with weed cutter
- High aspect rudder system
- Roller furling zipper luff jib with battens
- Jib halyard lock at sheave box at head of jib with zipper luff jib for easy sail removal and hoisting
- New high tech Harken below deck furling system for clean new look and no water in interior
- Permanent forestay
- Mast head asymmetrical spinnaker
- Mainsail halyard lock at mast head
- Custom trailing package that is easy to tow behind any vehicle
- Easy to rig, launch and retrieve from a boat ramp
- Easy to launch from a hoist with a single point lift
- No mainsail traveler
- No backstay
- Legs in with no hiking
- Anti-hiking backside pads for greater comfort and safety with black powder coated support stanchions
- Large foot rests on cockpit floor
- Motor well in deck for motor stowage and easy access
- Emphasis on youth and female participation
- No crew weight rule
- Open to all sailmakers
- Easy to ship — two boats in a container on trailers, or four boats in a container stacked
- Race ready from the factory – just add water approach – the Melges Way!
- No fairing – a strict one design!
- Worldwide brand strength and fleet building history = strong resale values
- Category 1 Driver class
- Aramid sail allowance for added performance and longevity
- Annual sail purchase limitations
- Fully vinylester resin infused sandwich laminate with core-cell core, insuring a lightweight, strong, high-quality laminate with incredible consistency of weight
- Fully CE certified trailer for worldwide access including mast stand and mast hold down
- Built by McConaghy Boats, one of the best boat builders in the world
- 500 - 600 lbs (225 - 272 kg) recommended crew weight range



**Audi**

**MELGES<sup>20</sup>**

**REICHEL/PUGH**  
YACHT DESIGN